

Marine Safety Information Bulletin

Commander
U.S. Coast Guard
Sector Delaware Bay
1 Washington Ave
Philadelphia, PA 19147

MSIB Number: 28-20
Date: December 11, 2020
Contact: Waterways Management Staff
Phone: (215) 271-4814
E-Mail: DelawareBayWWM@uscg.mil

SUBMERGED OBJECT DELAWARE RIVER – DRAW RANGE

The Captain of the Port, Delaware Bay, is notifying mariners of a submerged object that has been reported in Draw Range in the vicinity of the Delair Railroad Bridge on the Delaware River. Mariners are advised to use extreme caution when transiting this portion of the Delaware River as depth at mean low low water could be hazardous to navigation. Vessels drafting over 30 feet should avoid this area and transit around the object.

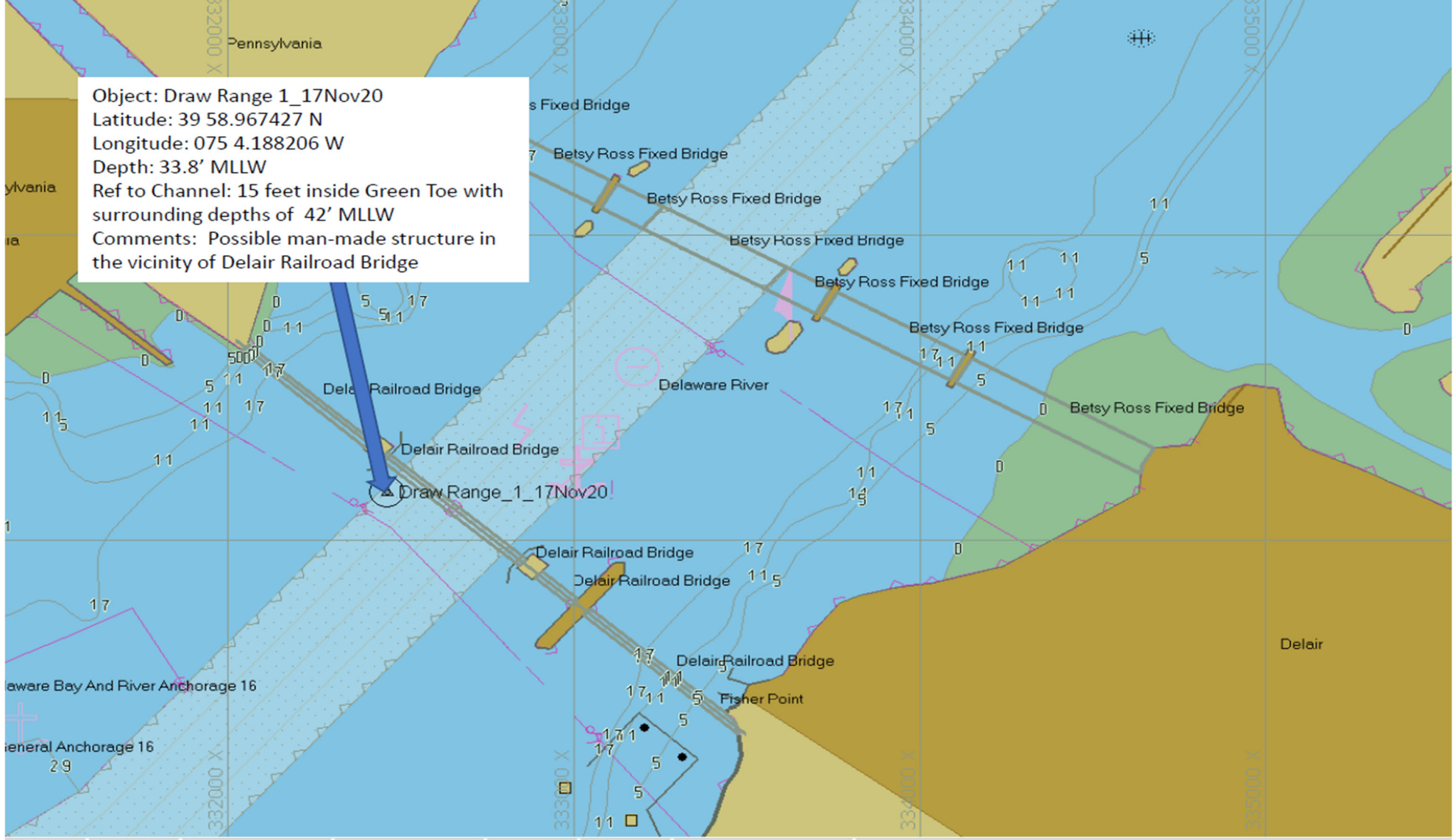
- Draw Range Object:
 - Minimum depth 33.8 feet at mean low low water.
 - Approximate location 39° 58.967427 N, 075° 4.188206 W.

The U.S. Army Corps of Engineers is currently evaluating the object and assessing the potential for removal.

Please see the attached chartlet for further information.

If you have any questions regarding the content of this bulletin, please contact the Waterways Management staff at (215) 271-4814 or the Command Center at (215) 271-4807.

J. D. THEEL
Captain, U.S. Coast Guard
Captain of the Port, Delaware Bay



This release has been issued for public information and notification purposes only.